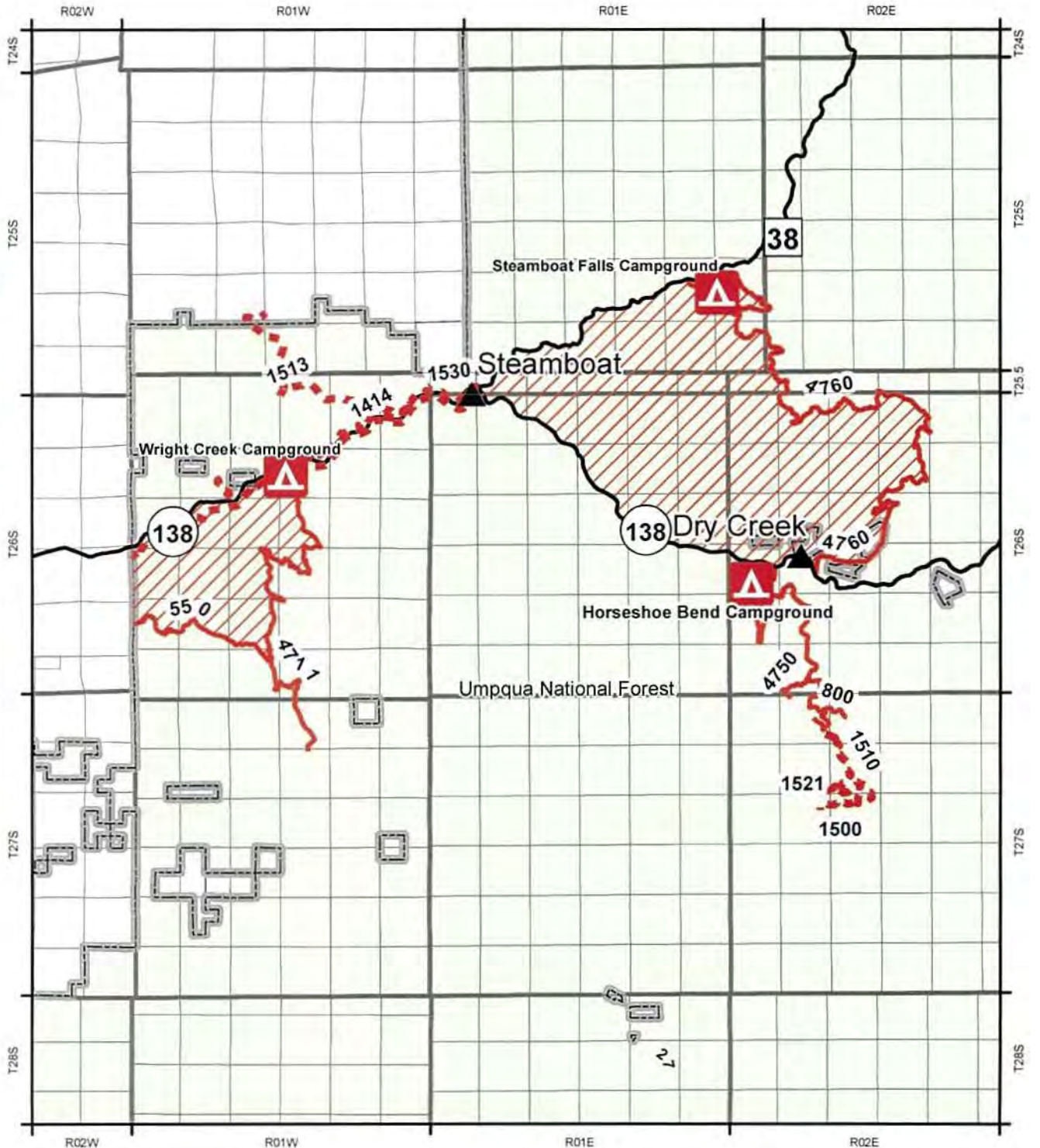
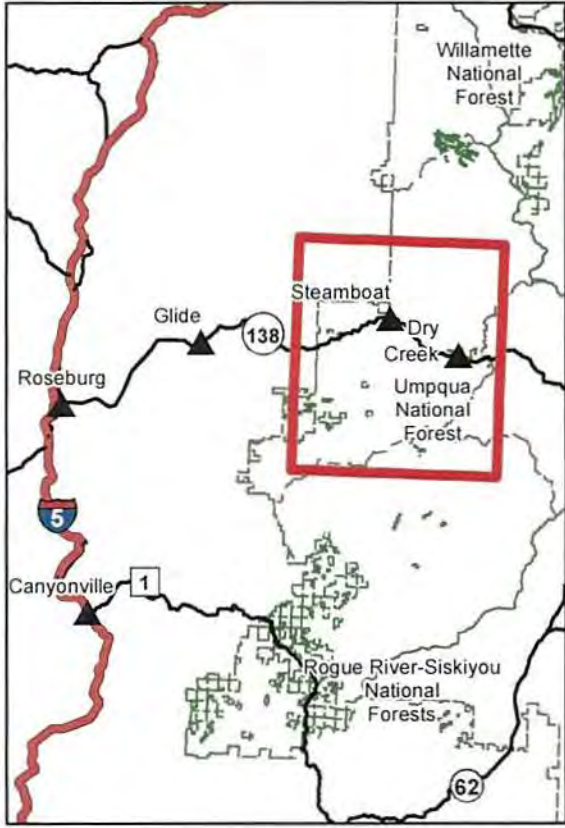


Exhibit A: Order # 06-15-06-17-370  
 North Umpqua Ranger District  
 Umpqua National Forest  
 North Umpqua Complex Area  
 and Trail Closure Order  
 August 12, 2017



- Legend**
- Trail Closures
  - Other Roads
  - Area Closures
  - Campgrounds Closed
  - Closed Roads
  - National Forest Administrative Boundary
  - Private Forest Service Land

